
DRAFT

KENYA NATIONAL SPATIAL DATA

INFRASTRUCTURE (KNSDI)

POLICY

Presented by

H.M. NGOMO
Member KNSDI
Secretariat

4th NSDI WORKSHOP: 30th November 2005

INTRODUCTION

Purpose of the policy document

- To establish a policy for the collection, integration, distribution, use and sharing of geospatial information (GI) and services.
In the public, private and civil society organisations



KNSDI Vision

- **To provide a national infrastructure for access and use of geospatial information in decision making at local, regional and national levels for sustainable development.**

KNSDI Mission

- **To promote the production, sharing and use of geospatial information for sustainable development**

Objectives

- To develop national policy, institutional framework and administrative arrangements for development and sharing geospatial datasets
 - To eliminate wastage of resources and duplication in the production of geospatial information
-

Objectives.....

- To develop acceptable standards for data production and distribution
 - To develop a solution for easy discovery and access of geospatial data (clearinghouse)
 - To promote and co-ordinate national participation in international initiatives
-

KNSDI

Definition of NSDI

- NSDI is the technology, policies, standards and institutional arrangements that facilitate the availability of and access to spatial data.
 - It promotes geo-spatial data sharing throughout all levels of government, the academia and the private sectors, thus enabling effective use of geo-spatial data for decision-making and development.
-

Purpose of NSDI

- To govern
- For use in research, education and as base information for planning and sustainable development.

GEO-SPATIAL DATASETS

There are two categories of datasets;

Fundamental datasets

- Datasets of common-use and of national importance (i.e. geodetic controls)

Thematic datasets

- Datasets required for specific applications.
 - There are two categories:
 - That are produced only by legally mandated agencies e.g. oil pipeline corridor map
 - That are produced according to specific user requirements, e.g. tourist map, soil map
-

STANDARDS

- Standardization enables interoperability of information systems.
 - Important aspects of standardization in KNSDI include;
 - Production standards,
 - Presentation standards
 - Data transfer/exchange standards,
 - Hardware and software standards.
-

METADATA

- Data about data.
 - It assist the user to determine how best to use the data.
 - It benefits the producer, who acquires;
 - A valuable inventory of his data holdings
 - Precious marketing environment
 - Data producers shall provide metadata for their products
-

LEGAL FRAMEWORK

Custodianship

- The custodian shall be the person or organization who is responsible for the production, storage, management and distribution of the dataset on behalf of another organization (i.e. Government).
 - The producer of public-funded data shall be the custodian and not owner, managing the data as a trustee for the community and the authoritative source of the fundamental dataset.
-

Confidentiality, Privacy and Liability

- Data providers shall disclose or make available their datasets on request unless it is prevented by law.
- Only geospatial data related to national security shall be granted confidentiality.
- A geospatial data custodian shall not be accountable for the integrity of data that has been modified by a user

Confidentiality, Privacy and Liability....

- A custodian shall be deemed to possess indemnity against any liability arising from unauthorized use of its dataset.
- A user shall report any error affecting the quality of a geospatial data to the provider.

Copyright

- A data custodian shall own the copyright of the data.
- For value-added data, the producer shall own the copyright of the new data and acknowledge the source of the original data.
- For integrated datasets, the producer shall own the copyright subject to permission from the copyright holder(s) of the individual base data.

Copyright.....

- A data custodian and user shall, enter into a licensing agreement prior to the utilization of any geospatial dataset

PRICING

- For publicly funded geo-information and services, the aim of this policy is not to achieve cost recovery, but to make them more accessible, affordable, effective and efficient, with a uniform pricing policy.
-

DATA ACCESS AND SECURITY

- There shall be two categories of data access, namely:
 - Restricted access (related to national security)
 - Free Access (others under a legal framework)
-

- All archived data shall be made available to agreed parties
 - An access registration system, shall be put in place.
 - The mode of access shall be defined in the access protocol and it may include on-line access or off-line access
-

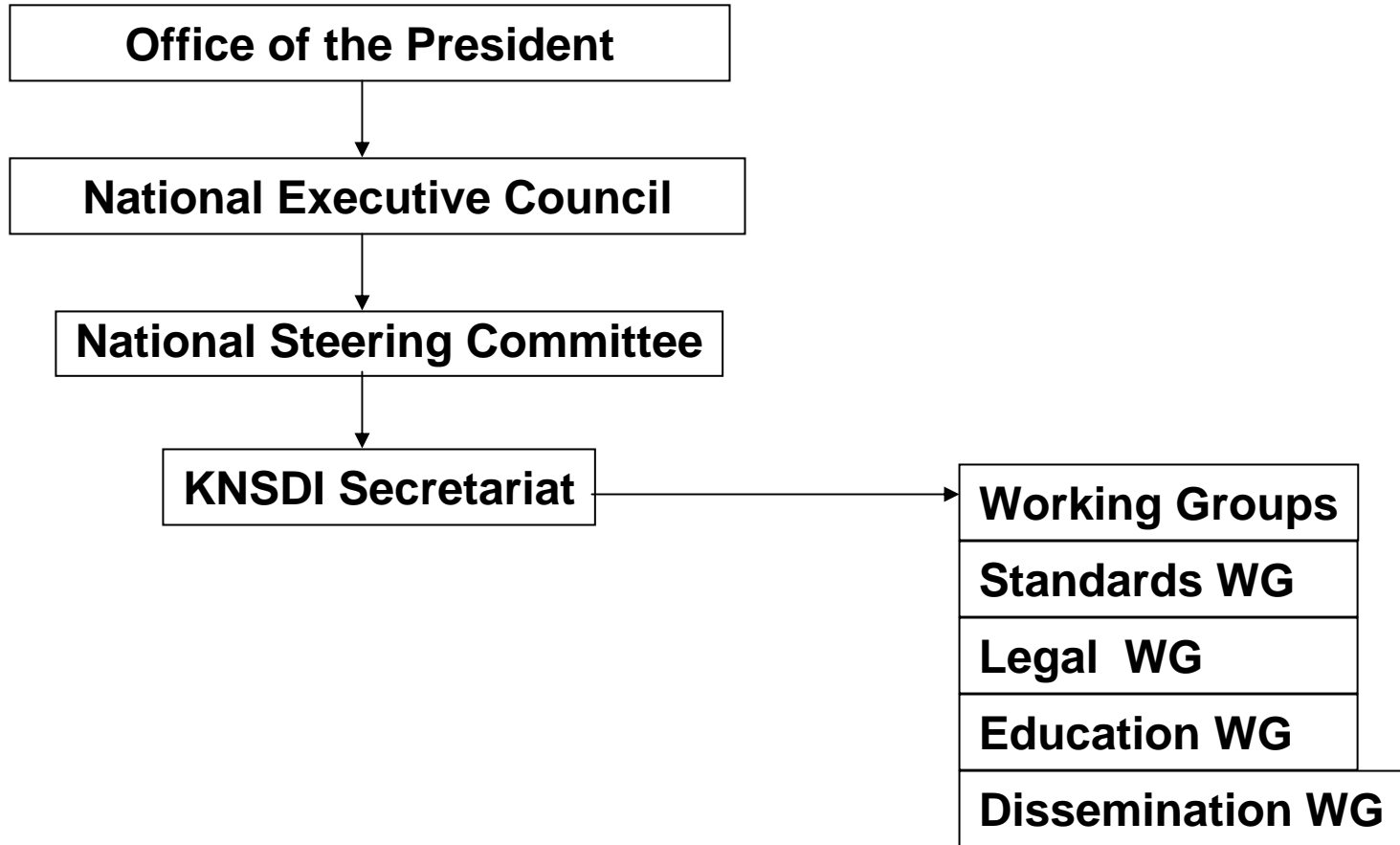
- Apex Clearinghouse shall be established at the main KNSDI focal agency.
 - Each producer agency shall establish a metadata server as a node, linked to the apex Clearinghouse.
 - Reasonable security measures shall be put in place.
-

- Each of the KNSDI Nodes will be on an Intranet – ensuring full security
 - The master KNSDI Server – will serve as the Gateway on the Internet, with a web domain name (e.g., www.knsdi.gov.co.ke)
 - The KNSDI at all levels will require sufficient bandwidth
-

FUNDING

- The top KNSDI organs will work out the mechanism for obtaining finances
 - Government will take the lead with an annual budget to support operations
 - Each stakeholder could build up a fund base for its respective operations.
 - At an appropriate time, the KNSDI could explore ways of commercializing its operations.
-

ORGANISATIONAL STRUCTURE



FUNCTIONS

Office of the President

- Function: Patron

National Executive Council (NEC)

- Membership: Ministers of main stakeholders
- Function: Policy and funding

National Steering Committee (NSC)

- Membership: Directors of partner organisations
 - Function: Report to and advise NEC

 - Supervise implementation of KNSDI
-

KNSDI Secretariat

- Function: Coordinate NEC, NSC and Working Groups

Working Groups (WGs)

- Member: Experts from partner organisations
 - Function: Making recommendations on given terms of reference to the KNSDI Secretariat
 - TORs as established in 2nd KNSDI workshop
-

TRAINING AND CAPACITY BUILDING

- Every GI project shall include a training component
 - The KNSDI coordinating agency and other stakeholders shall carry out public awareness programmes
 - All institutions of learning offering GI-related programmes shall review their curricula in line with advances in GIT.
-

- KNSDI stakeholders shall regularly carry out impact assessment of GI projects on the society
 - Government, through the coordinating agency, shall encourage research on new GI innovations and applications.
 - There shall be a programme of mandatory continuing educational/professional development for GI practitioners.
-

IMPLEMENTATION PLAN

- Establishment of a KNSDI Task Force
 - Preparation of the KNSDI Policy and Action Plan.
 - Government approval of the KNSDI policy – with commitment from KNSDI stakeholders
 - Formulation of KNSDI Bill and its enactment through Parliamentary process
-

- Definition of KNSDI Standards – Content, Design, Network, Exchange etc
- Design and Organization of KNSDI Metadata
- Development of KNSDI Search and Access Protocols
- Establishment of KNSDI Network
- Establishment of KNSDI Nodes by NSDI stakeholders.

END
